

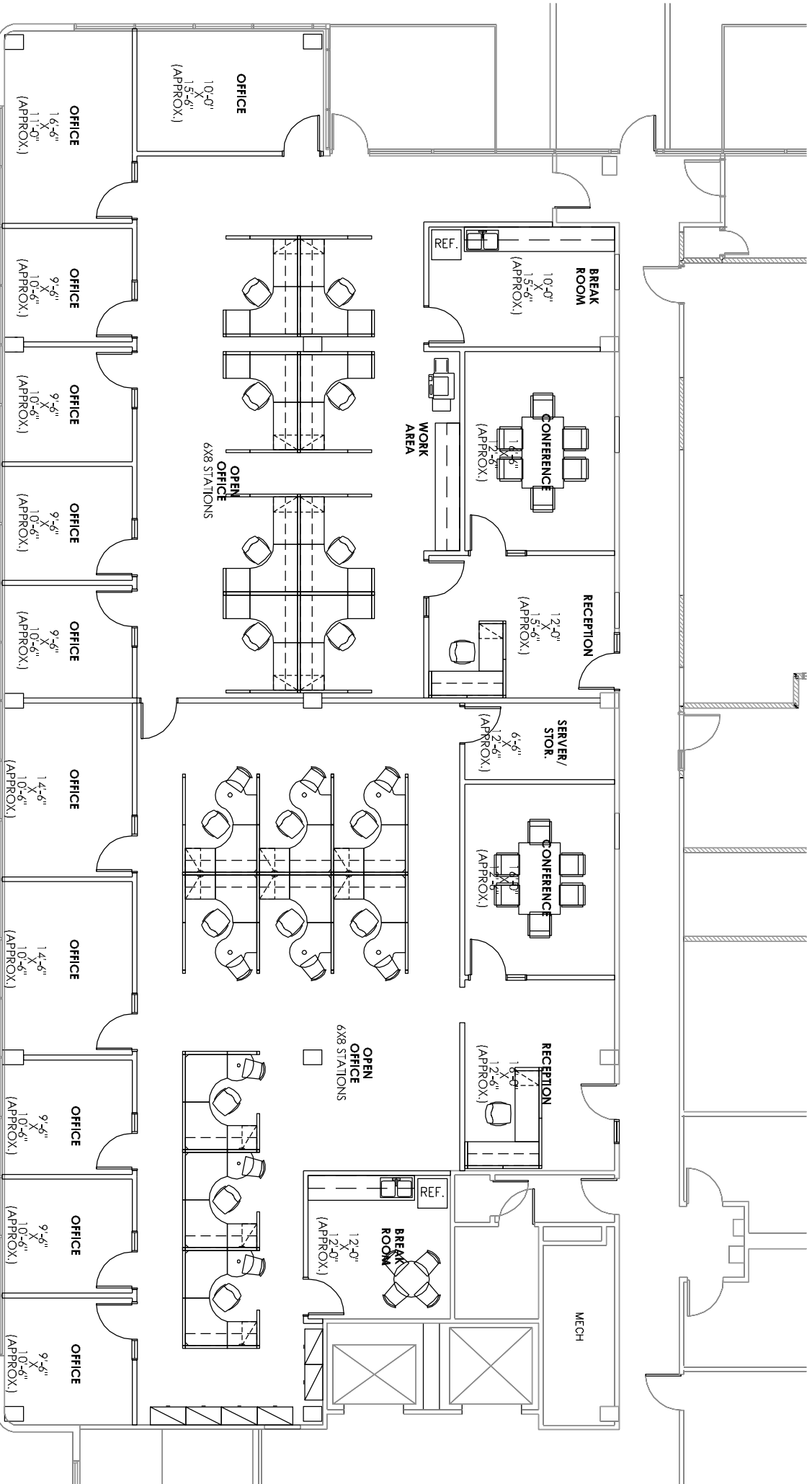
VACANT
SUITE 210
7,673 USF/ 8,911 RSF

Scale: 1/16" = 1'-0"

April 21, 2009

SPEC SUITE
CENTRE CREEK PLAZA
LEVEL 1 - TEST FIT





**VACANT
SUITE 210
2,644 USF / 3,063 RSF**

**VACANT
SUITE 210
2,759 USF / 3,204 RSF**

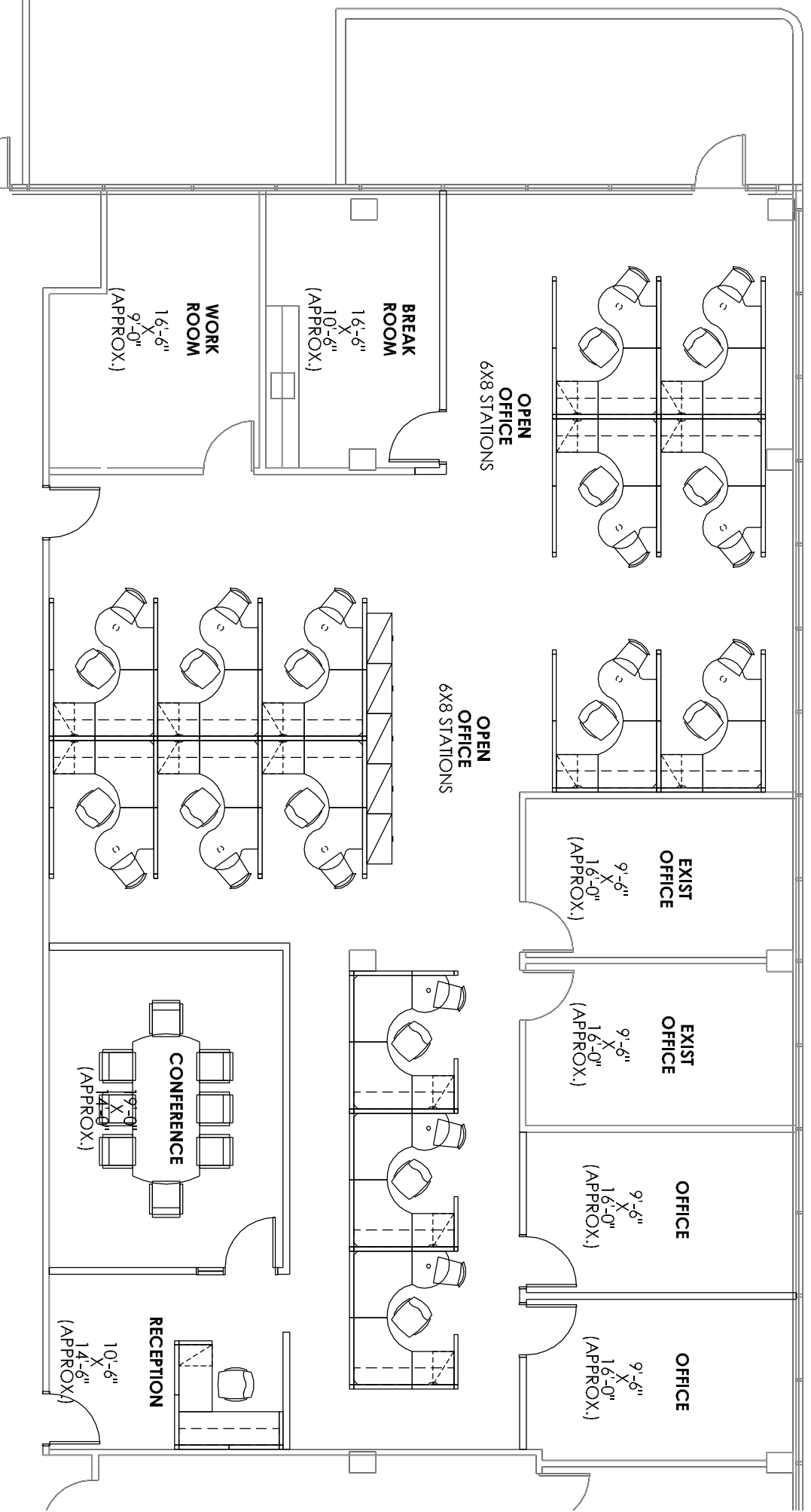
Scale: N.T.S.

April 21, 2009

**SPEC SUITE
CENTRE CREEK PLAZA
LEVEL 2 - TEST FIT**



VACANT
SUITE 310
3,384 USF / 3,919 RSF



Scale: N.T.S.

April 21, 2009

SPEC SUITE
CENTRE CREEK PLAZA
LEVEL 3 - TEST FIT

