

1812 Centre Creek Plaza

AUSTIN—NORTHEAST FOR LEASE \$16.00 Full Service

- Close Proximity to *NEW* Toll Road
- Building Key Card Access
- 3.37/1,000 SF Parking Ratio
- Private Tenant Balconies
- Building Conference Room/Kitchen
- Showers / Lockers



**Tenant incentives available,
including moving allowances and
free rent!**

Ask About Broker Incentives



Balcony View



Lobby



Building Exterior

Current Inventory (Will Build to Suit):

Suite 100 = 4,880 RSF

Suite 120 = 3,924 RSF

Suite 140 = 1,864 RSF

Suite 260 = 7,673 RSF
(Will Divide)

Suite 206 = 3,713 RSF
(Private Interior Restrooms)

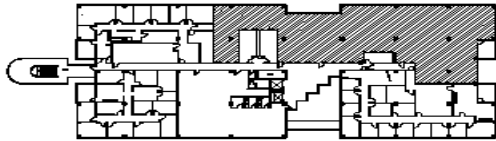
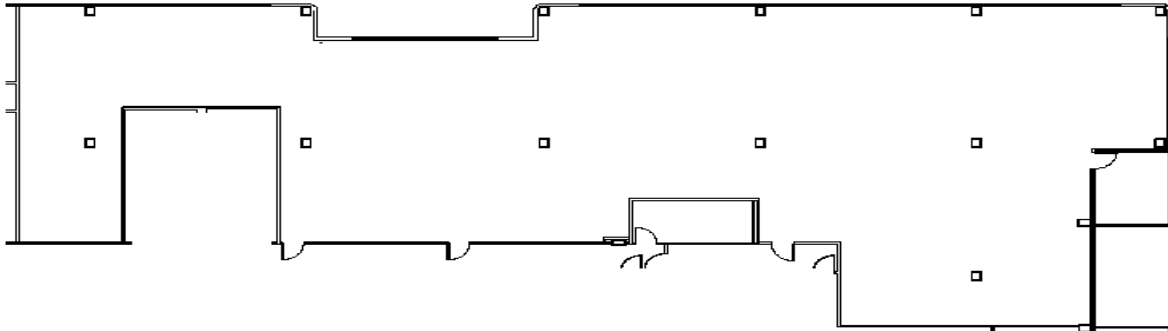
Suite 300 = 3,912 RSF
(will divide)

For leasing information or to schedule a
tour, please contact
Trish Williams
512-891-0300
twilliams@premgmt.com

Visit www.premgmt.com for floor plans and
additional leasing information

Leasing information also listed on CoStar

The information above has been obtained from sources deemed reliable, but no guarantee, warranty or representation is made as to the accuracy thereof and same is submitted subject to errors, omissions, change of price, rental or other conditions and may be withdrawn without notice

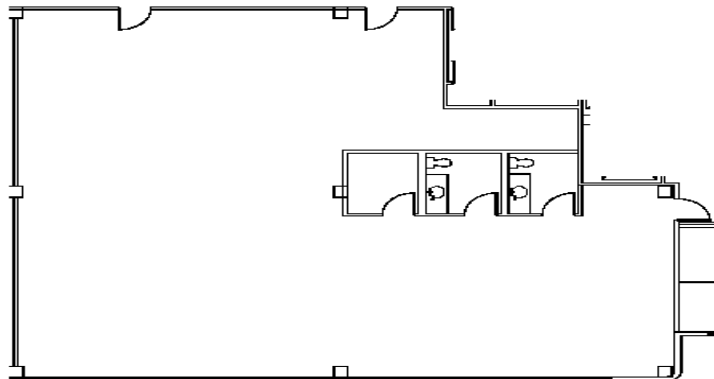


VACANT
 SUITE 250
 4,635 USF / 7,673 BSF
 Project Number
 0912-00
 Date
 November 23, 2009



Centre Creek Plaza
 Floor 2 Lease Sheet

©Tipton Studio and Building Group, Inc. All Rights Reserved. No part of this document may be reproduced without written permission from Tipton Studio and Building Group, Inc.



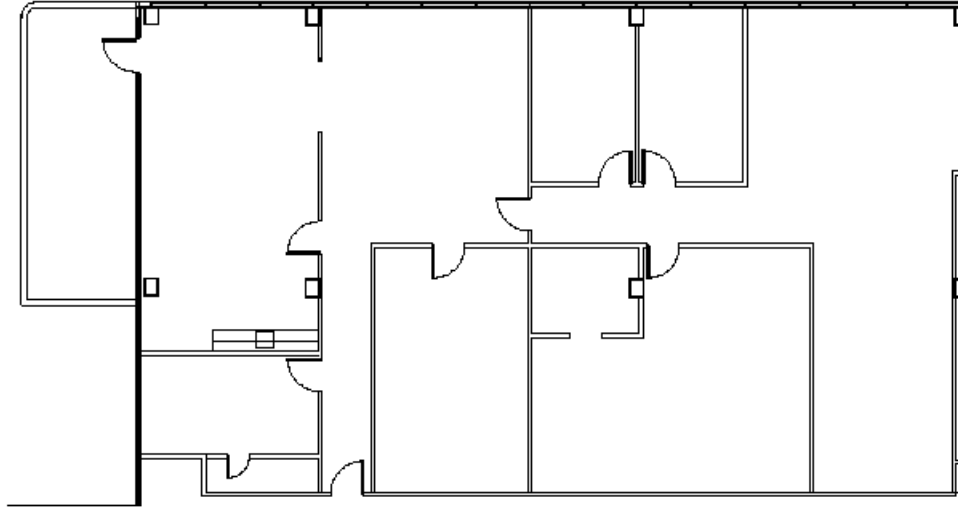
Scale: 3/32" = 1'-0"
 June 10, 2009

CENTRE CREEK PLAZA
FLOOR 2

VACANT
 SUITE 210
 2,797 BSF / 3,204 BSF



Subject: 1514 2009-09 Centre Creek Plaza (Final Building/Lease)
 Centre Creek Plaza Floor 2 Lease



Scale: 3/32" = 1'-0"
November 01, 2007

CENTRE CREEK PLAZA
SUITE 310

3,384 LSF
8,919 RSF



J:\Bldg\12\12-0285-01 Centre Creek Plaza\Bldg\310.swg
Centre Creek Plaza Floor 3.dwg